

# UNIWORLD

## FRUIT & VEGETABLE JUICER (UJC-750)



Unlike the traditional juicemaking machine, our Uniworld Fruit & Vegetable Juicer UJC-750 uses centrifugal principle to separate the juice and residue automatically. UJC-750 is engineered for heavy duty commercial use. It is ideal for Juice Bars, Restaurants, Health Clubs, Spas, Grocery Stores, etc. The heavy duty filter, 1 HP motor and specially designed knives are engineered for durability and high volume juicing.

### FEATURES :

- Easy to clean and use
- Juice both fruits and vegetables
- All parts in contact with foods are made of Stainless Steel
- Powerful 1 H.P. motor
- Heavy-duty construction for professional use
- Quiet during operation
- Ejection tube directs pulp below countertop
- One Year Limited Warranty

Uniworld Foodservice Equipment, Inc.  
Toll Free Phone: (888) 777-0671; Fax: (888) 888-3185

6361 Chalet Drive, Commerce, CA 90040  
[www.uniworldfoodequip.com](http://www.uniworldfoodequip.com)

### SPECIFICATIONS :

POWER : 1 HP  
ELECT. : 110 / 60  
R P M : 3450  
CAPACITY : 50 gal. / hour  
DIMENSION : 17"x12"x19.5"  
GROSS WT. : 69 lbs.



### GENERAL INFORMATION

This juicer is made of aluminum cabinet with fine finish, all parts in contact with juice are made of stainless steel. With its unique design of the cutting blade makes it suitable for all kinds of fruits and vegetables, such as carrots, cucumber, beet root, celery, tomatoes, apples, pears, grapes. We do not recommend orange and grapefruit.

It produces continuous fresh, healthy, and delicious juices in seconds.

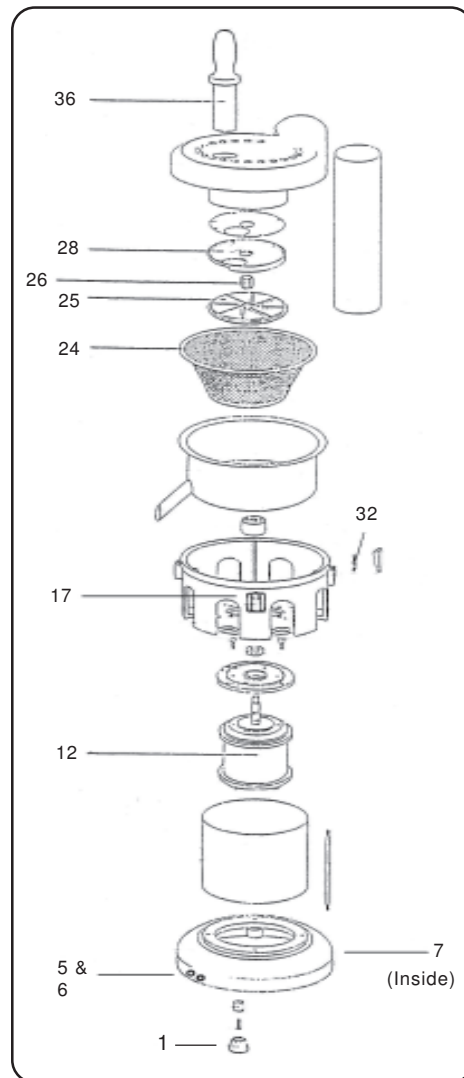
### HOW TO MAKE JUICES

Clean the fruits and vegetables, remove the hard core (such as peach, apple, etc.) where needed and peel where needed. Cut them to suit the feed-let of the machine and put them in a container.

Turn on the machine, when the unit is running steadily, put the fruits/vegetables into the feed-let continuously. The juice will come out from the outlet continuously and at the same time, the pulp will eject out of the pulp outlet.

### BASKET AND CUTTER CLEANING INSTRUCTIONS

The basket/filter must be soaked overnight - every night. This step should be done to ensure continued top performance of the machine. Strong vibration will occur if this instruction is not followed.



ITEM NO.	DESCRIPTION
UJC-P01	Rubber Foot Cap
UJC-P05	Push Button Start
UJC-P06	Push Button Stop
UJC-P07	Contacter
UJC-P12	Electric Motor
UJC-P17	Limit Switch
UJC-P24	Filter
UJC-P25	Movable Cutting Knife
UJC-P26	Fasten Nut
UJC-P28	Fixed Cutting Knife
UJC-P32	Clip Adjuster Complete
UJC-P36	Feed Rod